

# HYDROS

## Under sink Installation

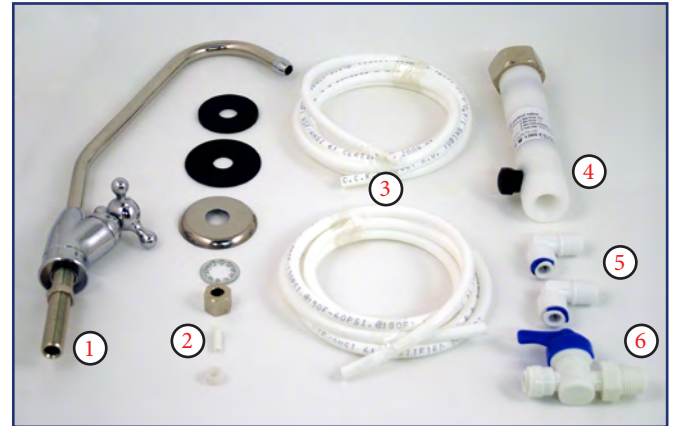
Using the optional under sink adaptor kit you can convert your single or three stage water filter into an under the sink filter easily.

### Tools Required for installation



- 12.5 mm Drill Bit & Drill
- Sharp Knife
- Adjustable Shifter
- Plumbers Tape

### Parts included with installation

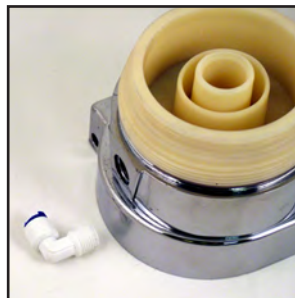


Please ensure all parts are present: 1. Faucet 2. Faucet washer / Nuts 3. Tubing (2x) 4. Cuno (pressure reducer) 5. Quick fit elbows (2x) 6. Quick fit screw tap

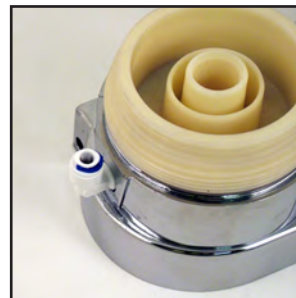
Healthstart® Life Products recommends that the Hydros under sink kit be installed by a licensed plumber.



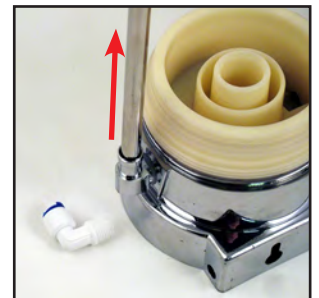
**Step 1.** Unscrew the black supply hose tap adaptor from the base of the water filter.



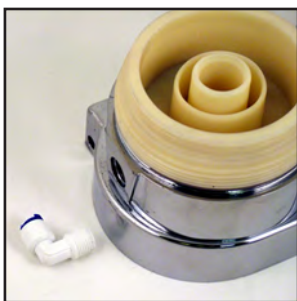
**Step 2.** Apply plumbers tape to the threaded end of the white elbow (Quick fit).



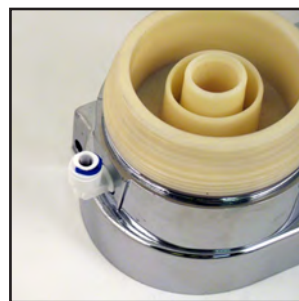
**Step 3.** Screw in the quick fit to the water filter base (do NOT over tighten).



**Step 4.** On the other end remove the stainless steel spout and then unscrew the metal elbow from the base of the water filter.

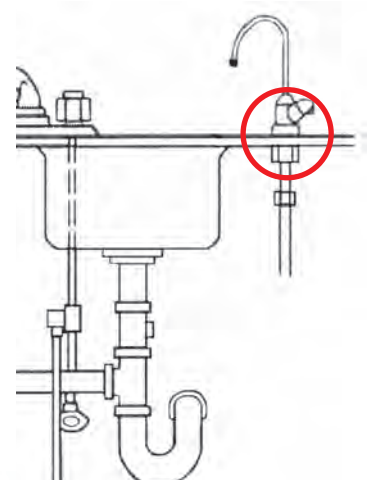


**Step 5.** Apply plumbers tape to the threaded end of the Quick fit elbow.



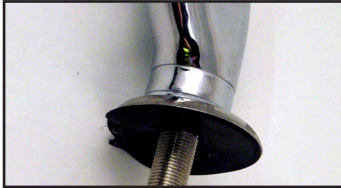
**Step 6.** Screw in the quick fit to the water filter base (do NOT over tighten).

**Step 7.** Locate an appropriate / preferred location on the sink that is safe to mount the faucet. Ensure that the underside of the sink at that location is free from obstructions such as water or drain piping, electrical wiring and structural supports. Mark and drill a 12.5 mm hole.





**Step 8.** Place the chrome dress ring onto the bottom of the faucet, next place the hard plastic gasket and soft rubber gasket on the thread and insert it into the drilled hole in the sink. Under the sink, add the washer and the nut and tighten.



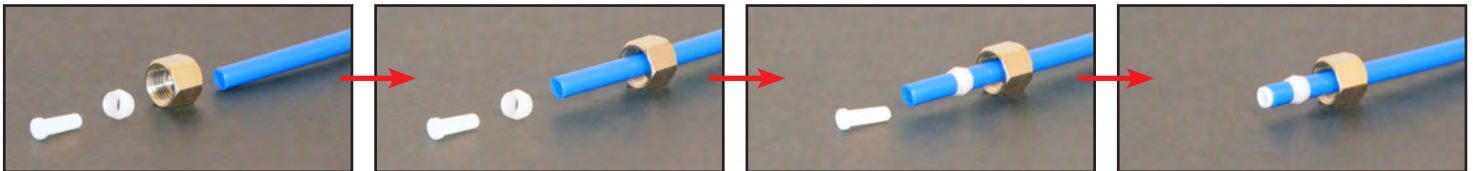
**Step 9.** Apply 2 to 3 turns of plumbers tape to the quick fit tap thread, to ensure a water-tight seal.

Attach the twist tap to an outlet of the pressure limiting valve.

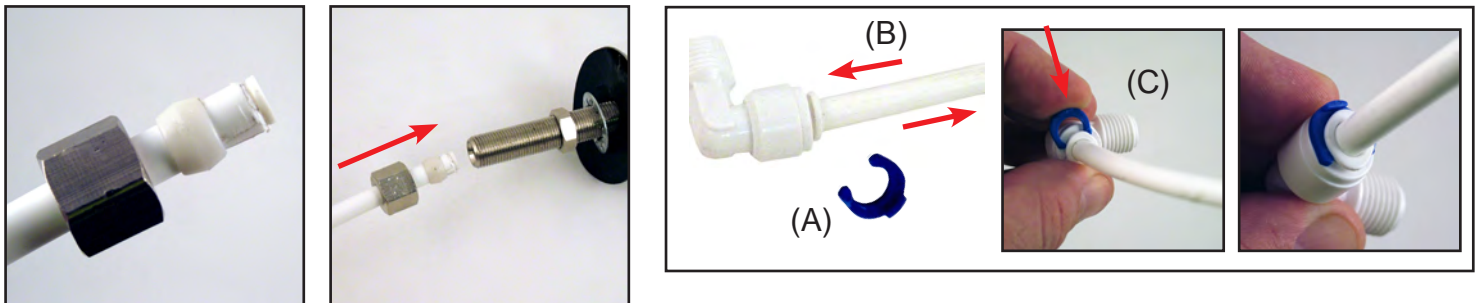
Install the water pressure limiting valve onto a dishwasher tap under the sink, **If there is no dishwasher tap installed, a "T" junction must be purchased and attached to the cold water inlet.**



Blue hose for illustration purposes only

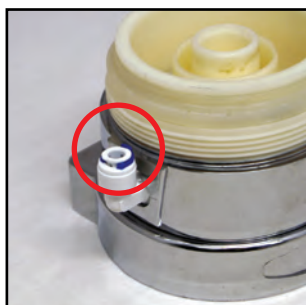


**Step 10.** Faucet hose connection configuration.

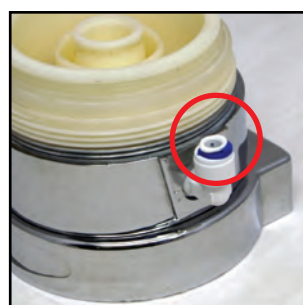


**Step 11.** Connect hose to bottom of faucet under the sink and tighten firmly.

**Step 12.** How to fit hose to quick fit elbow (A) remove blue "C" clip (B) push hose into hole then pull back slightly (C) replace blue "C" clip, check hose is snug.



**Step 13.** Connect the end of the hose (from the quick fit tap) to the quick fit elbow on the **LEFT** hand side of the 1 or 3 stage filter (healthstart logo facing you). **REFER STEP 12**



**Step 14.** Connect other end of the hose (from the faucet) to the quick fit elbow on the **RIGHT** hand side of the 1 or 3 stage filter (healthstart logo facing you). **REFER STEP 12** Refit the Filters and covers if removed, as per the manual. Turn quick fit tap on, check for leaks.

**Congratulations,**  
you are now ready to begin enjoying your filtered water.  
Please let the filter run for 10 mins before use.

